

More simple, More Smart

V1



# New AlorAir -R APP WI-FI Connection Guide

For Android and Apple users, the operation method and process are the same.

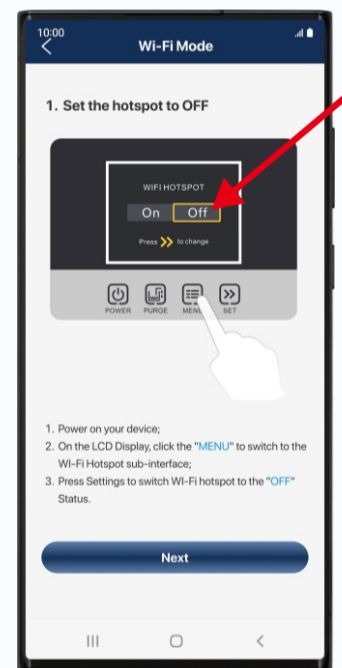
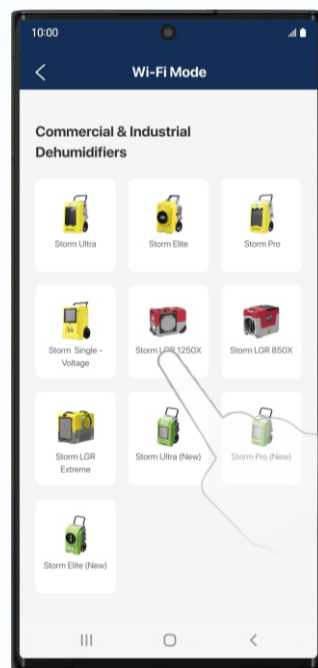
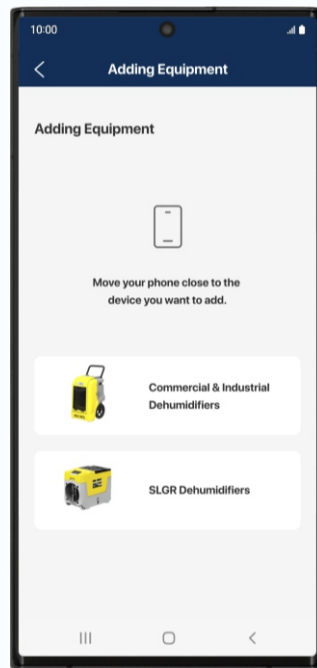
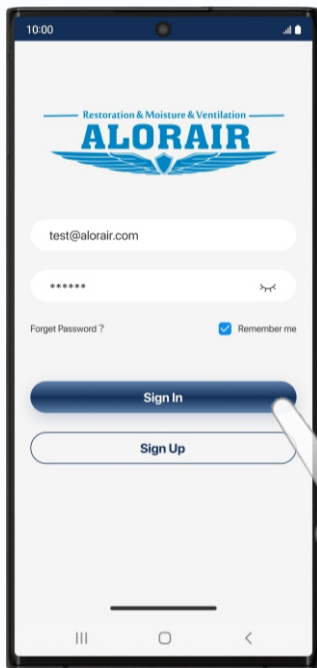


Download and install AlorAir-R from the App Store or Google Play Store.



## How it works?

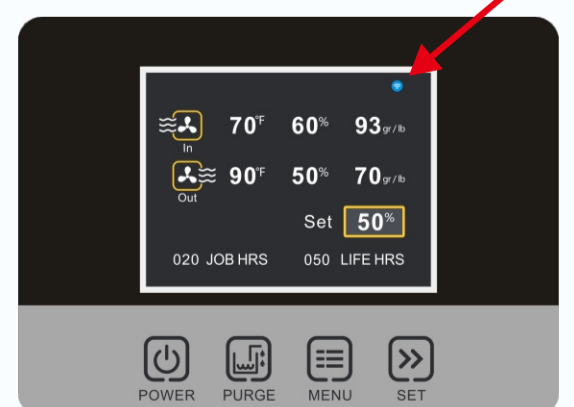
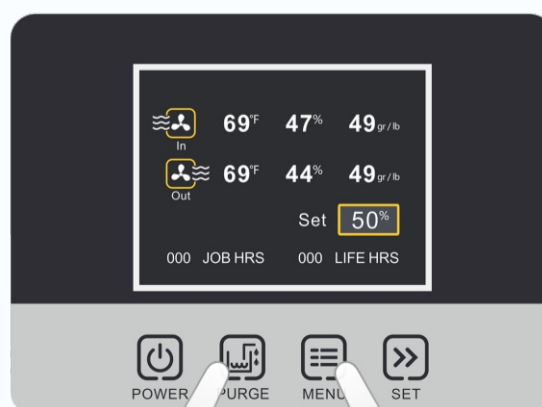
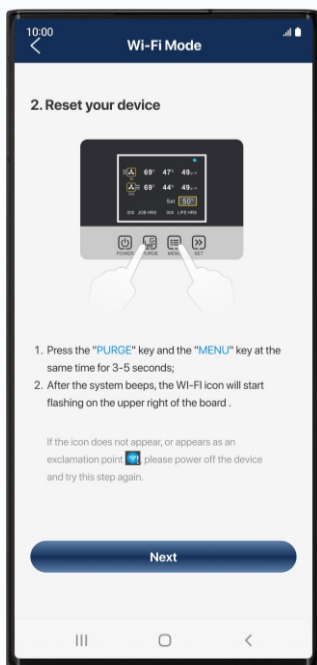
- 1 Sign up and login your account.**
- 2 Find your dehumidifier model.**  
*Let's take STORM SLGR 850X as an example*
- 3 Follow the steps on the App, press the "MENU" key of the board to switch the hotspot to "OFF".**



- 4 Follow the App steps to reset your device**

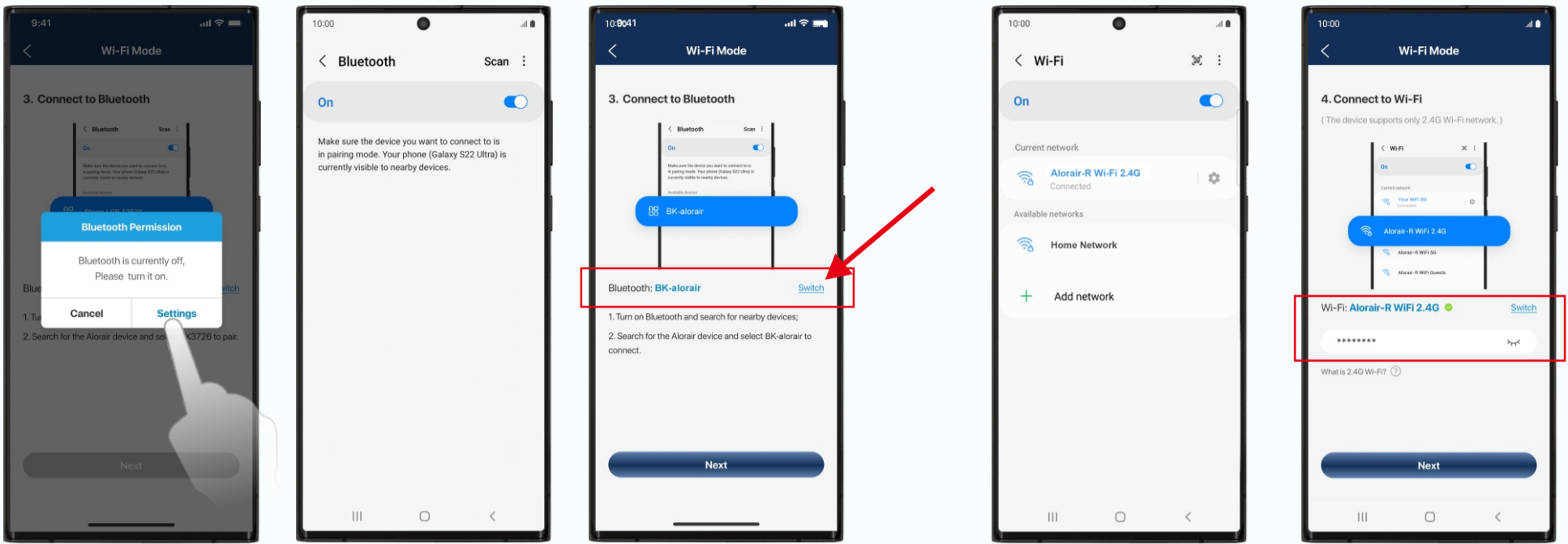
Press the "PURGE" key and the "MENU" key at the same time for 3-5 seconds.

After the system beeps, the **Wi-Fi icon** will start **flashing** on the upper right of the board .



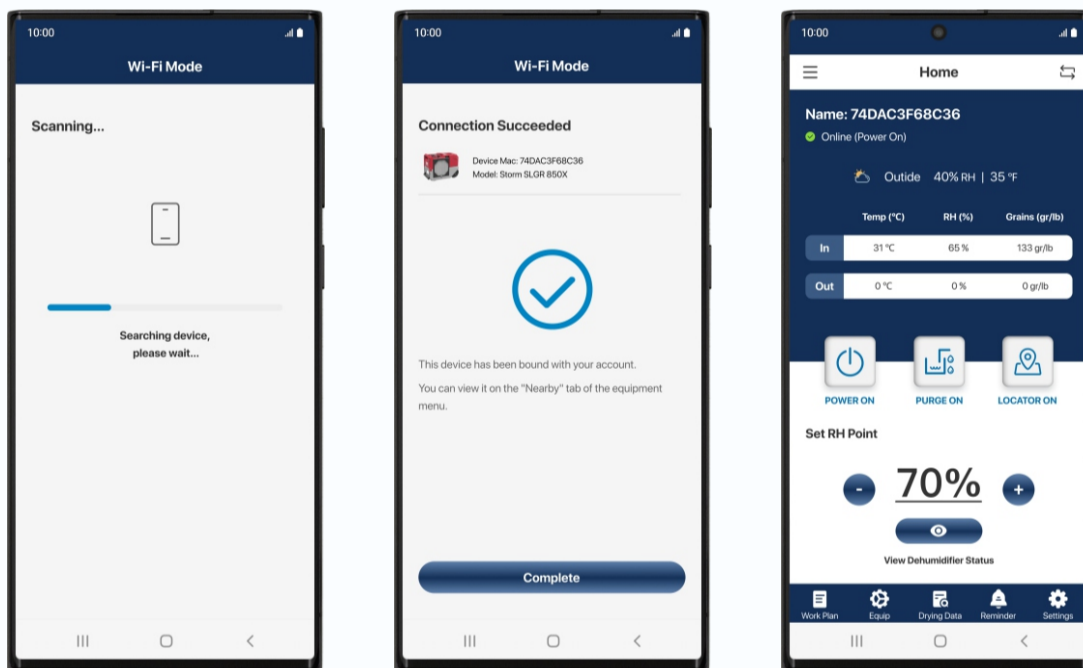
**5** Click the **“switch button”** and connect to the device Bluetooth- BK-alorair  
*Don't go to connect Bluetooth from the system settings, it can't be found.*

**6** Connect to the home Wi-Fi.  
*Wrong password will cause subsequent connection failure.*



Connection Succeeded

Once the app has finished Connection, you can start controlling the device



Connection Failure

If it fails, follow the APP prompts to troubleshoot and restart the connected device.

Add New Device

Enter the device list, you can click the **“+”** button to continue adding new

