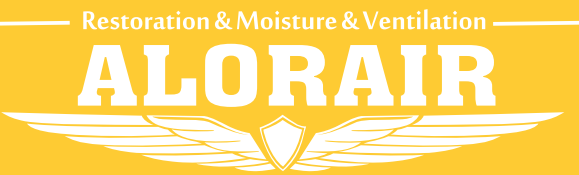


AlorAir-R App for Android App Direct Connect Manual

The screenshots are from the Android version of our App.



- 1 On the LCD display, click the "MENU" to switch to the Wi-Fi Hotspot sub-interface, then press "SET" to switch Wi-Fi hotspot to the "ON" Status.
- 2 Then select HF - LPT230 Wi-Fi and connect to it on your phone.

Download and install AlorAir-R from the App Store or Google Play Store.
Log in or sign up for a new account.

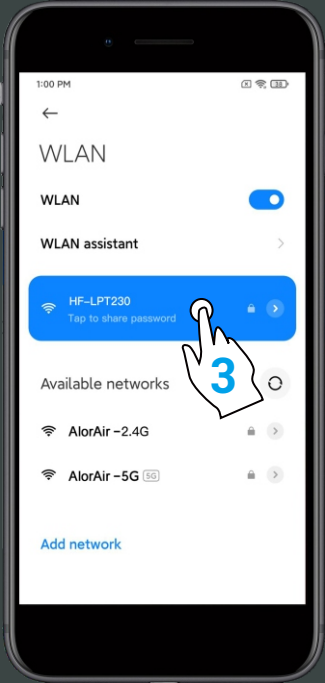
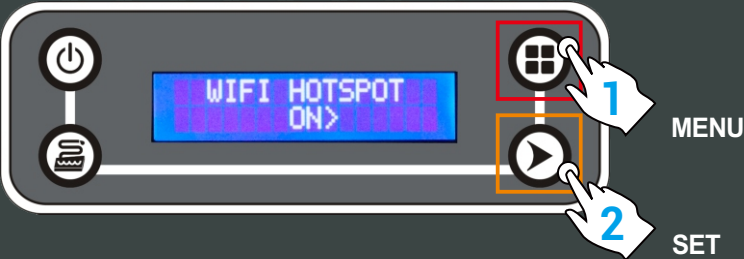
TWO CONNECTION MODES

1. Wi-Fi Connection (Priority use)

Mobile phone wireless connection home router.

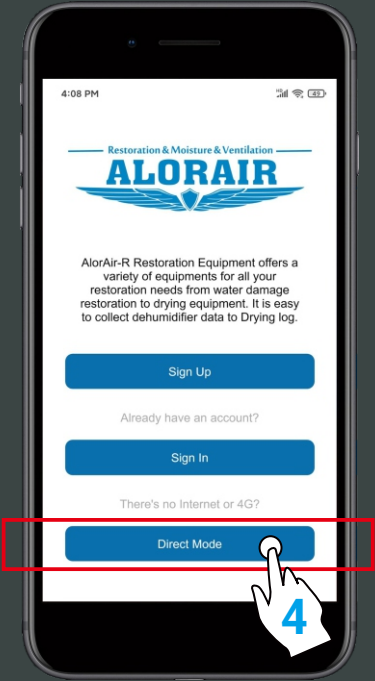
2. Direct Connection

In the absence of any Wi-Fi or 4G Network, the phone directly connects to the dehumidifier (Network starts with HF-LPT230).

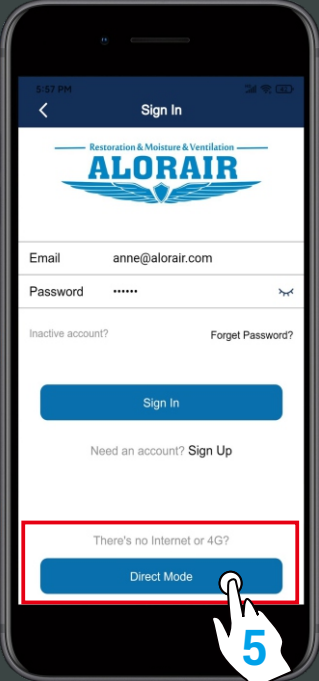


- 3 The following three interfaces can enter the "Direct Mode".

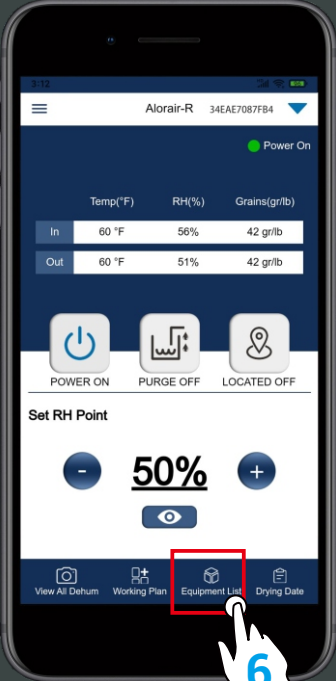
- 4 In the "Equipment-Nearby" sub-interface, click to "Get help" and select "Direct Mode Settings" button to enter the next step.



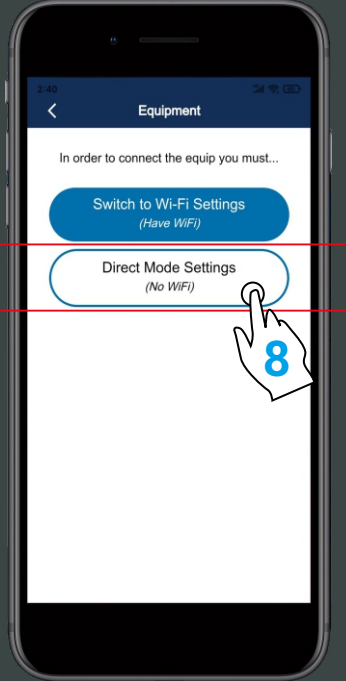
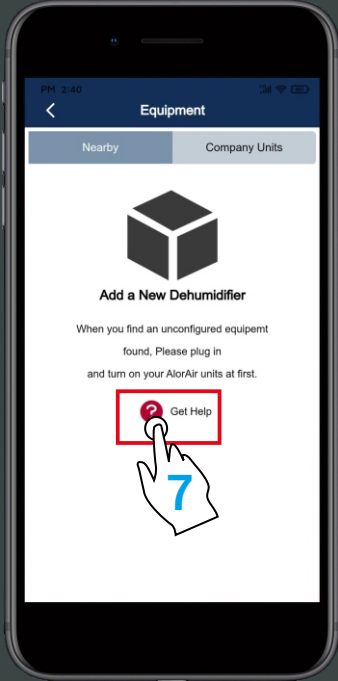
Start page



Login page



Home page



- 5 After making sure to complete the two conditions, click "I have successfully connected to HF-LPT230" Hotspot, then click the "connect" button, when the green hook icon appears, click "Next step" button to enter the Direct connect mode home page.

- 6 The direct connection step has ended. AlorAir recommended that users disconnect or delete other Wi-Fi during use. (In order to avoid automatically switching Wi-Fi in the background, which may cause the direct connection function to become unstable!)

