

AlorAir-R App for Android App Wi-Fi Connect Manual

The screenshots are from the Android version of our App.



- 1 Choose the **2.4GHz Wi-Fi** (not 5GHz) and connect to it, **then must disconnected or deleted other Wi-Fi**. (Otherwise, the device configuration will fail).
- 2 Click AlorAir-R App icon, enter App.

Download and install AlorAir-R from the App Store or Google Play Store.
Log in or sign up for a new account.

Two CONNECTION MODES

1. Wi-Fi Connection (Priority use)

Mobile phone wireless connection home router.

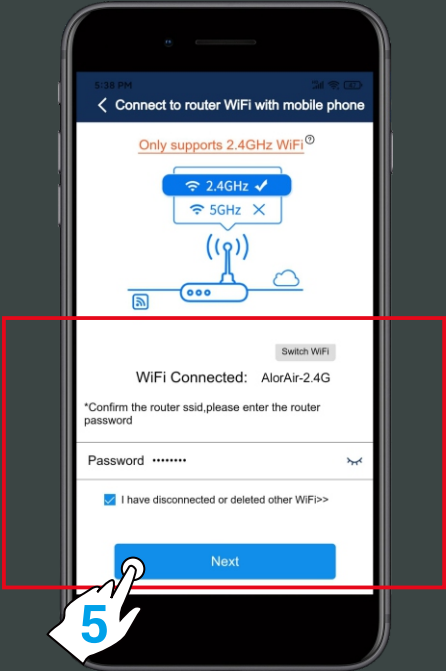
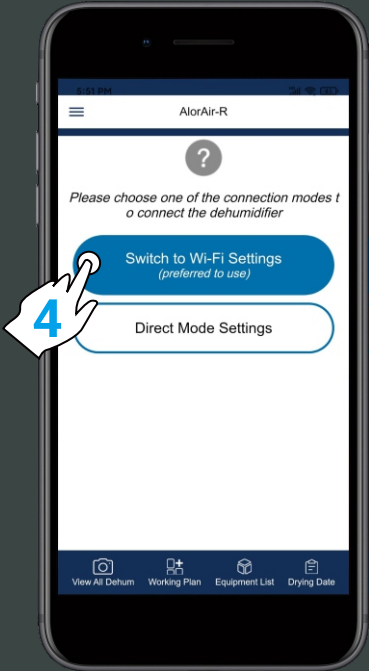
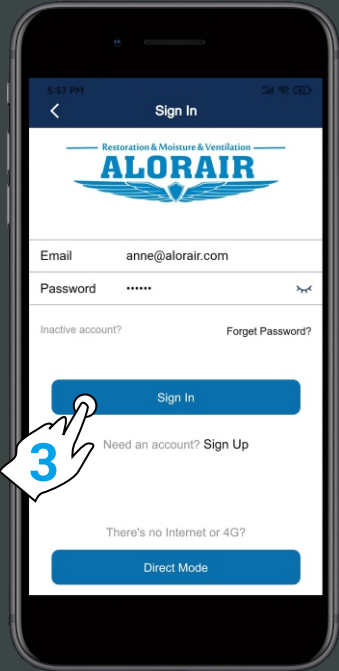
2. Direct Connection

In the absence of any Wi-Fi or 4G Network, the phone directly connects to the dehumidifier. (Network starts with HF-LPT230).



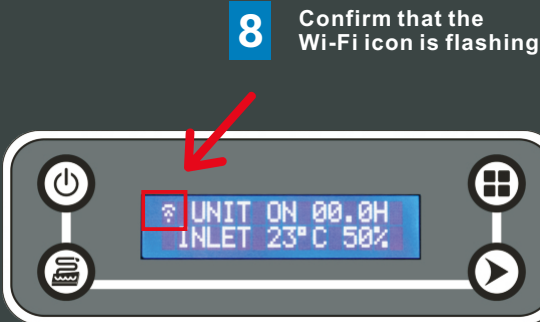
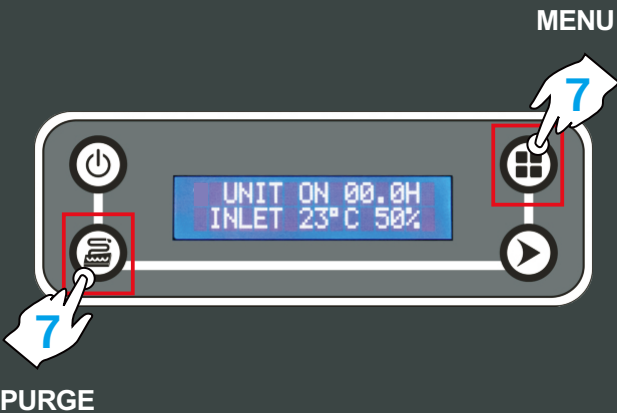
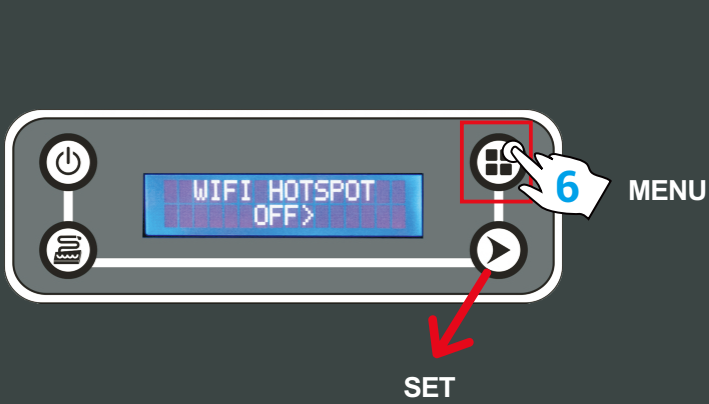
- 3 For new users, you first need to register an account, then activate the account in the email, and finally log in to your account. (Direct connection mode can be used without register an account).

- 4 Choose "Switch to Wi-Fi Settings" button. Confirm route ssid, please enter your router password. (**Check password, otherwise the network configuration will fail**).
- 5 Then " ✓ " I have disconnected or deleted other Wi-Fi. Finally, click "Next" button.



- 6 After the dehumidifier is powered on, on the LCD display, click the "MENU" to switch to the Wi-Fi hotspot sub-interface, then press "SET" to switch the Wi-Fi hotspot to the "Off" Status.

- 7 After pressing the "POWER" button to return to the main interface of LCD display, hold down the "PURGE" and "MENU" keys at the same time for 3-5s. The interface will give out a prompt sound, then Wi-Fi icon in the upper right corner will keep flashing.



- 9

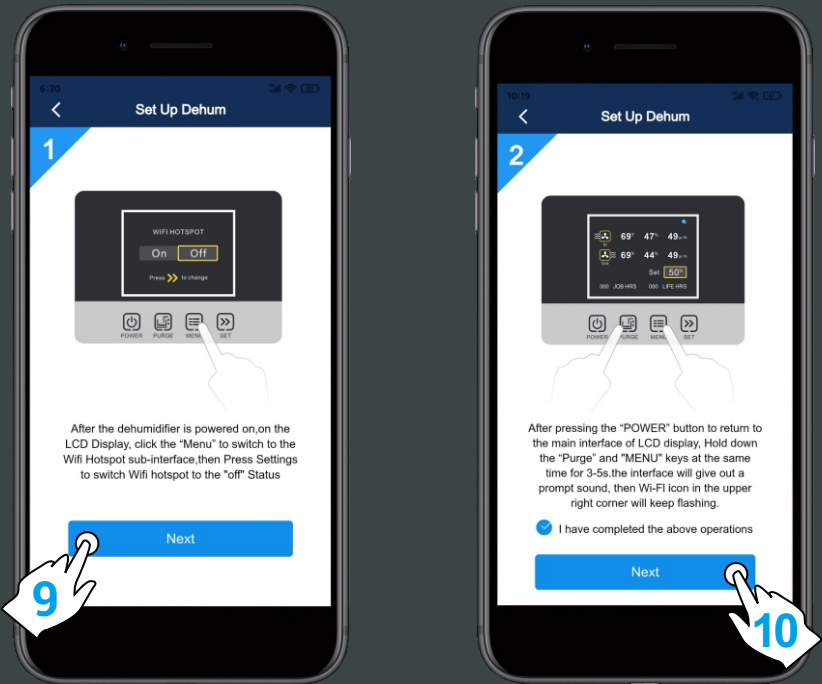
Re-confirm that the Hotspots status of the device is “Off”, then go back to the Set Dehum-1 interface of the App, and click “Next” button.
- 10

Confirm again that the Wi-Fi icon of the device is flashing, in the Set Dehum-2 interface, Then “✓” I have completed the above operations, and then click "Next" button.

Note: The operation method of the small LCD is the same as the big LCD. (Currently the App interface is a Gif image of the big LCD, we will add a Gif image of the small LCD in the future)

- 11

First, copy the password of the hiflying_softap hotspot, then click “connect to Dehum Wi-Fi button” to jump to the system settings page.



- 12

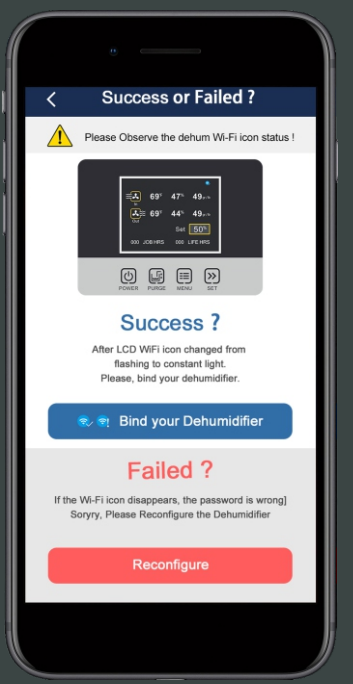
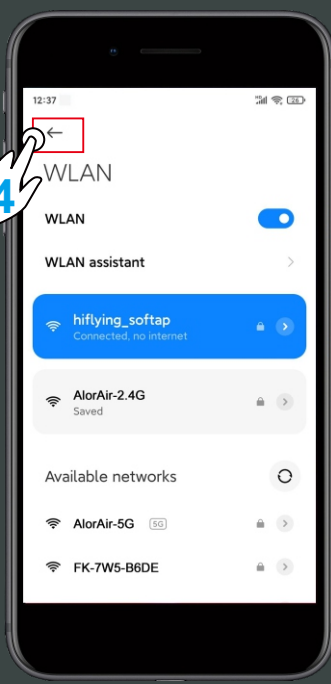
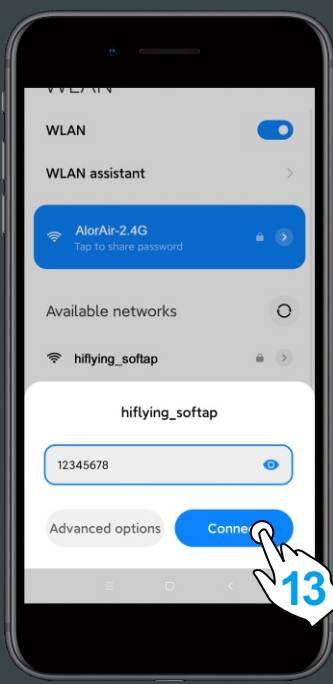
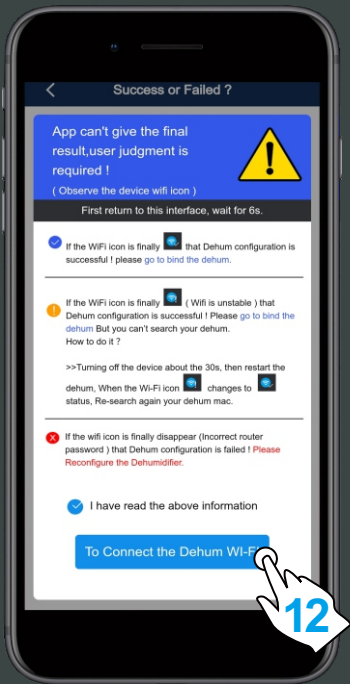
The App pop-up box will prompt the user, and the **final result needs to be judged by yourself** (please understand the content carefully, and take a screenshot to review if necessary).

- 13

To connect to hiflying_softap, paste the previously copied password or enter the password 12345678. Return to the App after successful connection.
- 14

The user needs to observe the status of the Wi-Fi icon of the device, make a judgment according to the prompts on the App interface, and decide the next operation direction.

Note: The Wi-Fi icon judgment method is the same. Suitable for small LCD and big LCD.



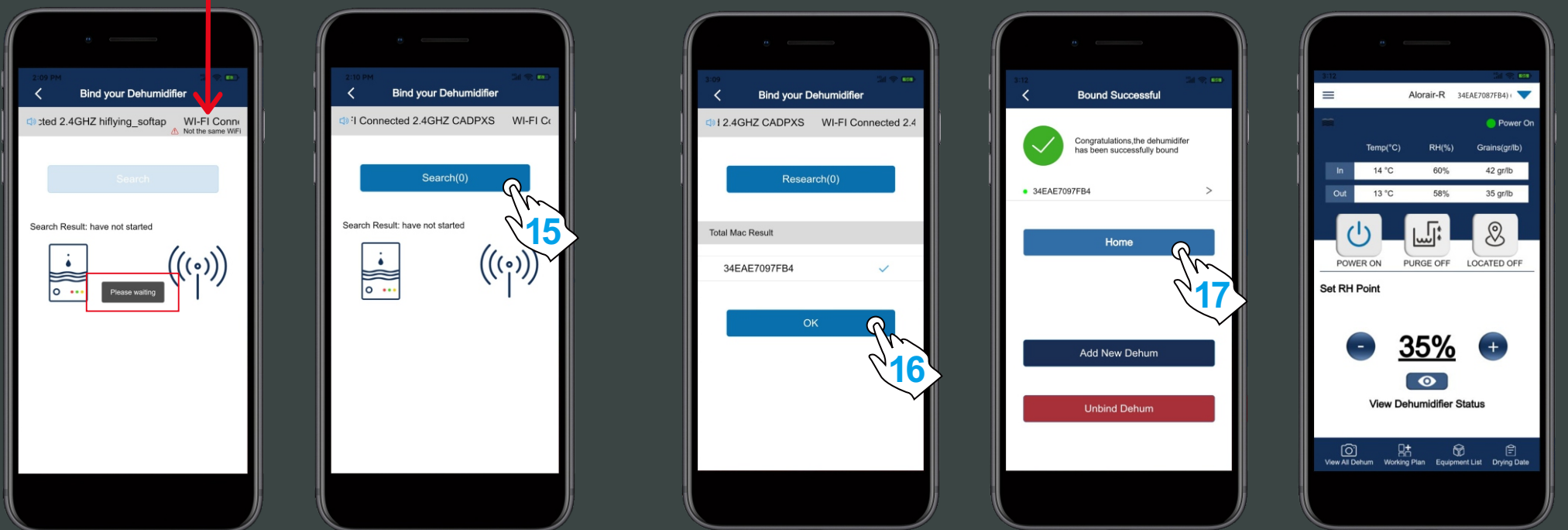
- 15

When you enter the application binding interface, please wait patiently for 6s, the system will auto switch back to the router's Wi-Fi, when the "search" button icon opens, you can click the search button to search for the dehumidifier.

- 16

When the device mac appears, click “ok”, and then click the “home” button to enter the device homepage. At this point, all the connection steps are over !

Wait for the stability of the device and App



For more information, please check the App user manual and Wi-Fi App videos on the www.alorair.com