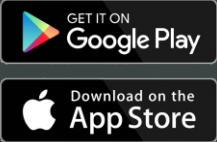
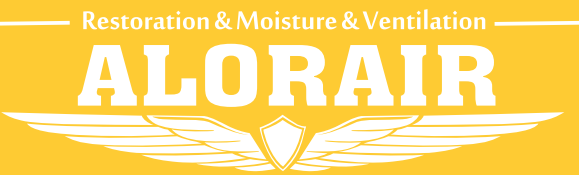


Wi-Fi Connect Manual

AlorAir-R App for iOS App

The screenshots are from the iOS version of our App.



- 1
- Choose your most used **2.4GHz Wi-Fi** and connect to it, **then disconnected or deleted other Wi-Fi.**
- 2
- After the dehumidifier is power on, on the LCD display, click the "MENU" to switch to the Wi-Fi Hotspot sub-interface, then press "SET" to switch the Wi-Fi hotspot to the "Off" Status.

1. Download and install AlorAir-R from the App Store or Google Play Store.
2. Log in or sign up for a new account.

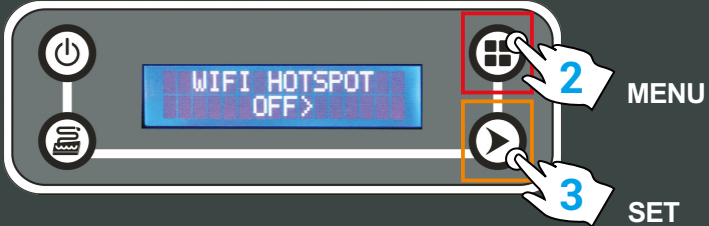
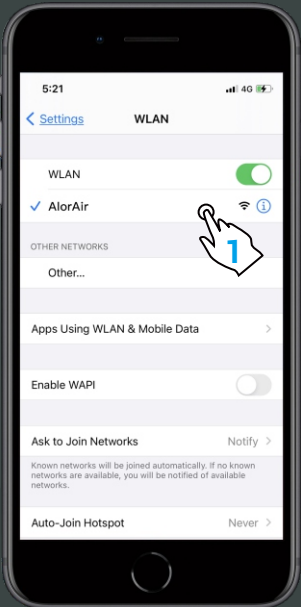
TWO CONNECTION MODES

1. Wi-Fi Connection (Priority use)

Mobile phone wireless connection home router.

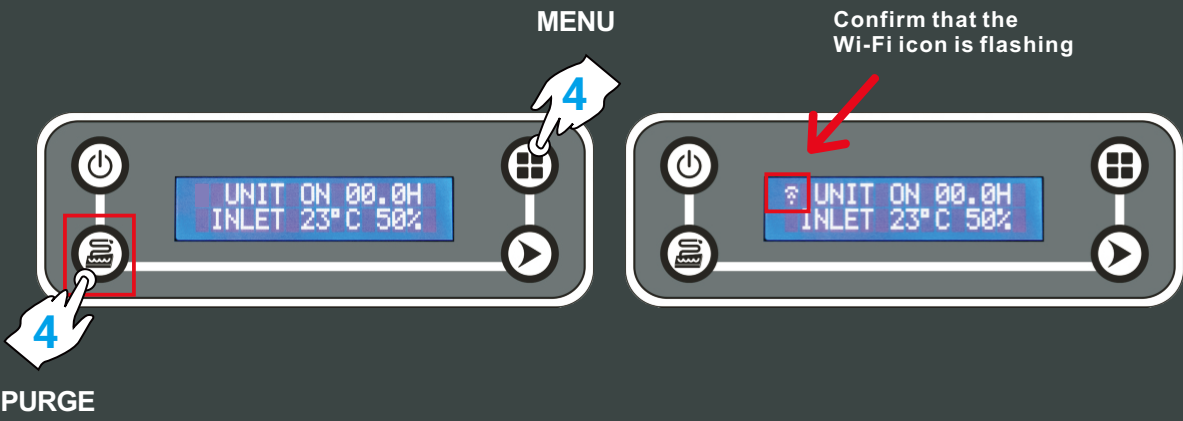
2. Direct Connection

In the absence of any Wi-Fi or 4G Network, the phone directly connects to the dehumidifier (Network starts with HF-LPT230 hotspot).



- 3
- After pressing the "POWER" button to return to the main interface of LCD display, hold down the "PURGE" and "MENU" keys at the same time for 3-5s. The interface will give out a prompt sound, then Wi-Fi icon in the upper right corner will keep flashing.

- 4
- New users log in for the first time, click "Switch to Wi-Fi settings" to enter the sixth step. Old users can select the "Equipment" to enter the fifth step.



For New User Enter

For Old User Enter

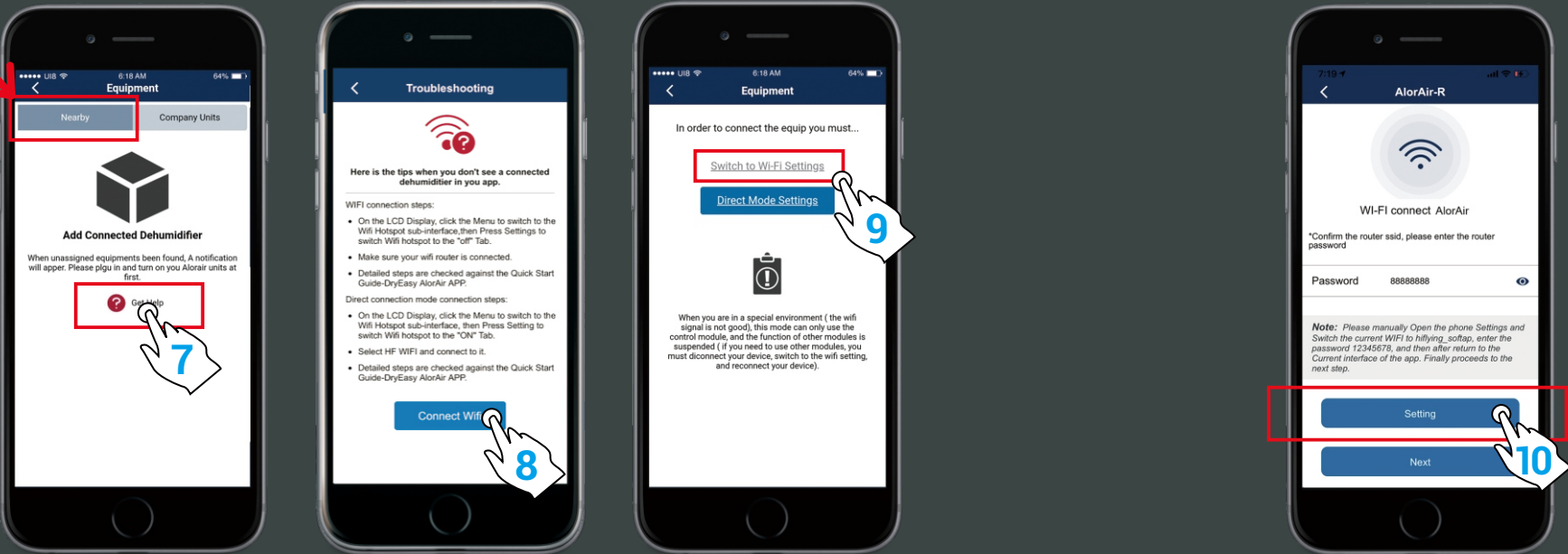


Equipment

- 5
- First, click the "nearby" options tab, then click to "Get Help" button. Second, in the troubleshooting interface, click "connect Wi-Fi" button. Third, after entering the next interface, click "switch to Wi-Fi settings" button.

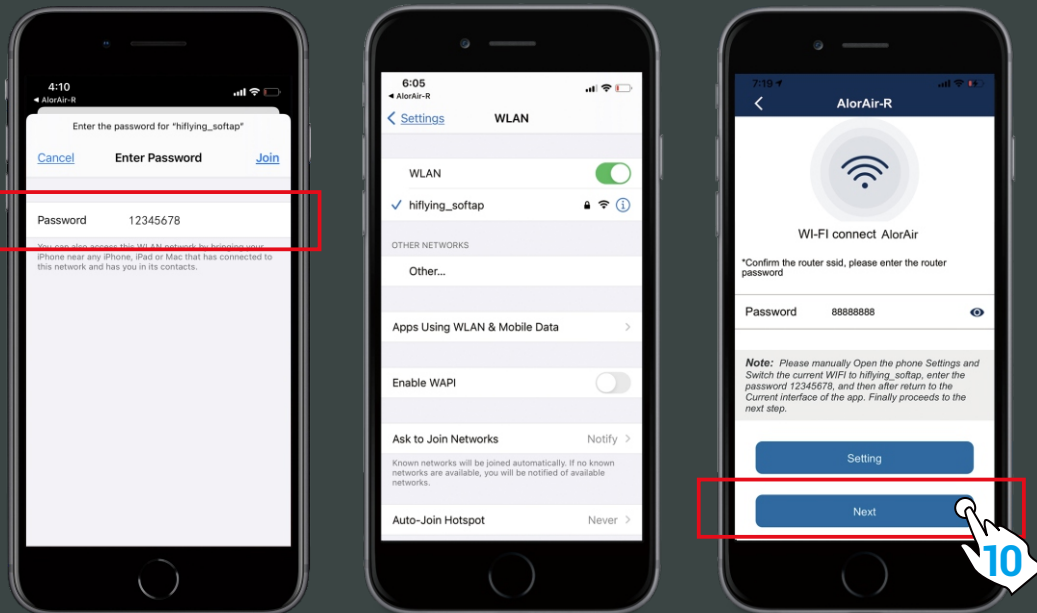
- 6
- Please enter your router password. Then click the "Settings" button Jump to iPhone - WLAN. (Note: wrong password will cause device configuration failure).

Nearby



7

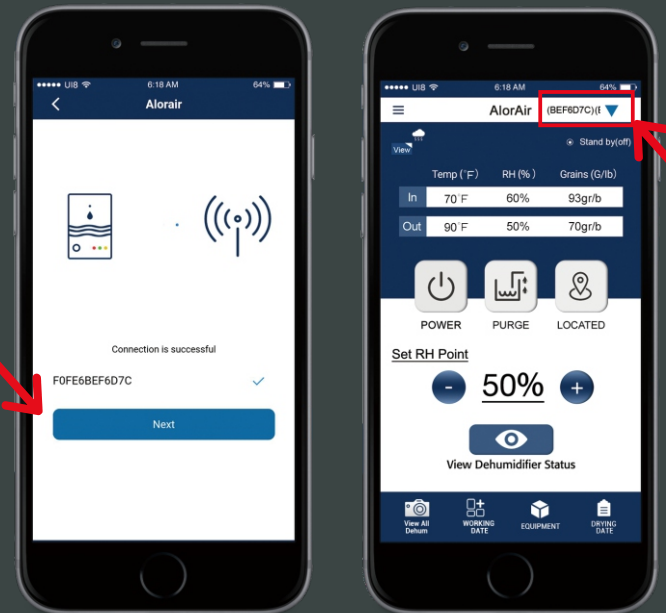
First, switch the current Wi-Fi to hiflying_softap hotspot, then enter the password 12345678, after the connection is successful, please return to AlorAir-R App. Finally, Please click “Next ” button.



8

When the device mac appears, click "OK" and you will enter your dehum homepage (For example, FOFE6BEF6D7C, the device MAC number is in the upper right corner), at this point, all connection steps are over.

Name of
connected
Dehum



Name of
connected
Dehum

Note: Once the connection is successful, if you want to change the name, please go to the device list to change.



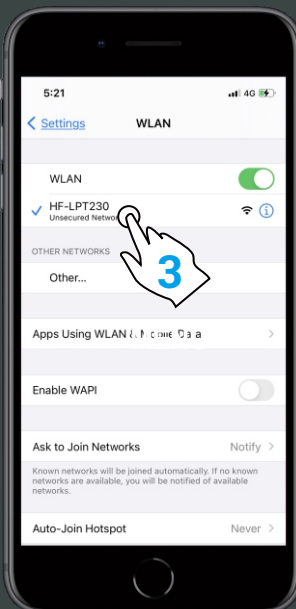
DIRECT CONNECTION
STEPS
Start Here

1

On the LCD display, first click the “MENU” to switch to the Wi-Fi Hotspot sub-interface, then press “Setting” to switch Wi-Fi hotspot to the “ON” status.

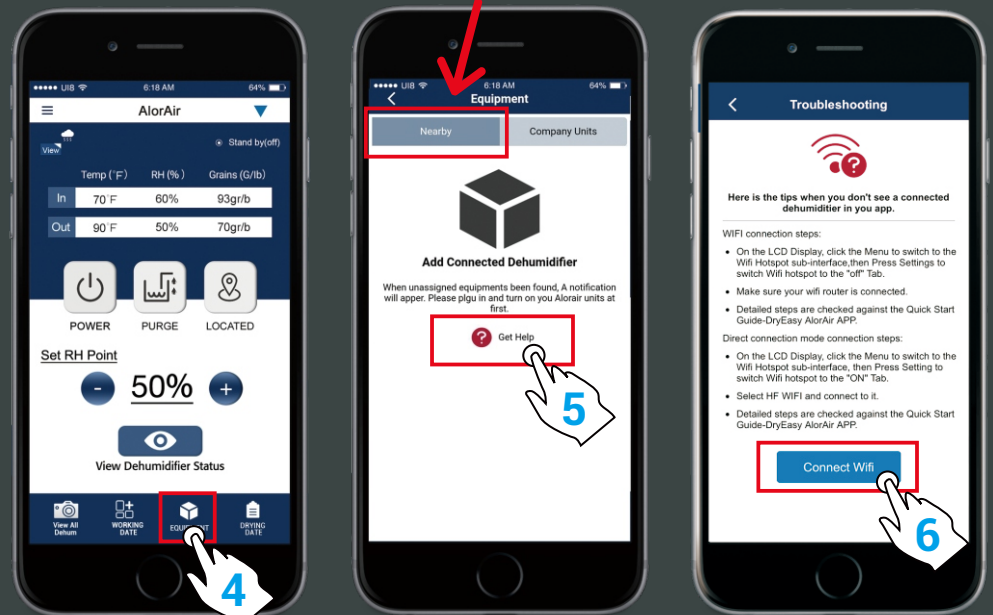
2

Select HF-LPT230 Wi-Fi and connect to it on your phone.



3

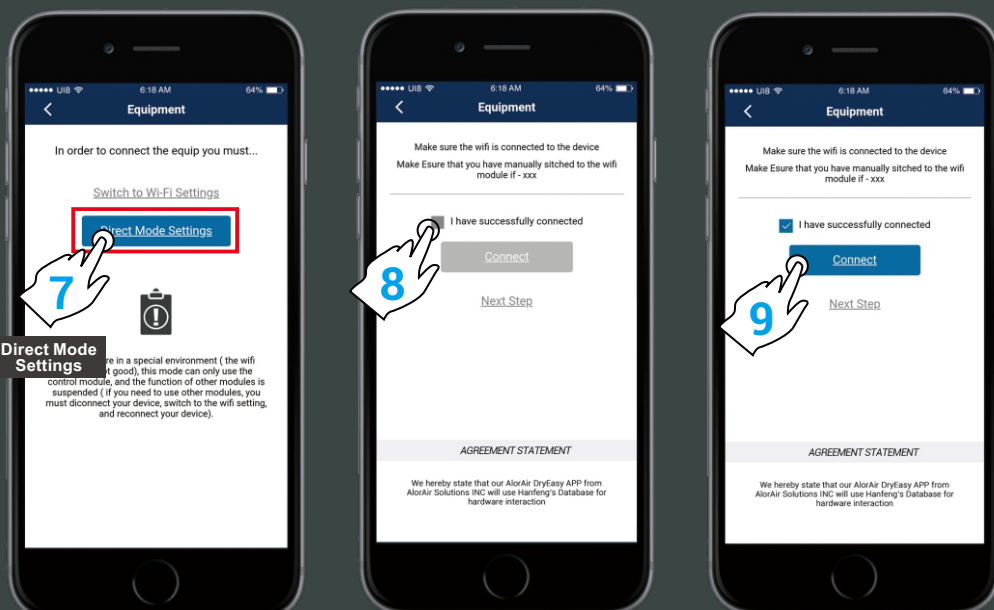
Follow the steps below.



Home Page

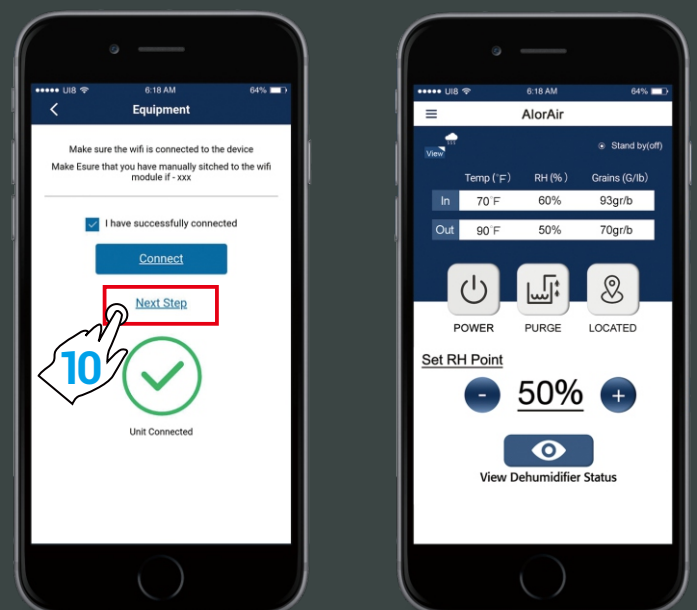
4

First, select the “Direct Mode Settings”. Second, click I have connected successfully. Third, click the “connect” button.



5

When the “Next Step” button is activated and turns blue. Click it to go to the Direct Mode Home Page.



For more information, please check the App user manual and Wi-Fi App videos on the www.alorair.com