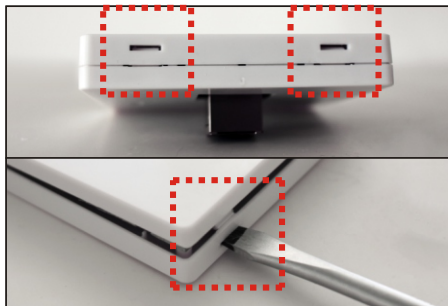


Remote Controller Installations

Read and Save These Instructions

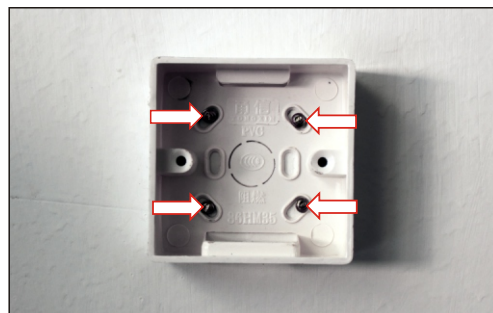
STEP 1

Softly Poke these 2 Slots with a Flat blade screwdriver or the flat things, then open it by hand.



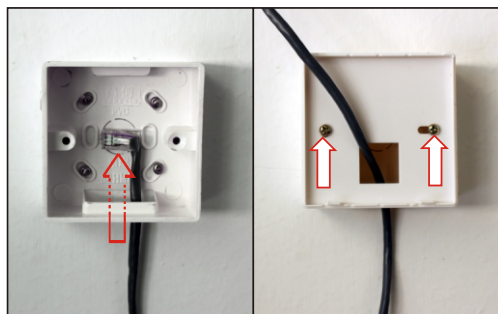
STEP 2

Securing the switch box to where you want to place with 4 Screws.



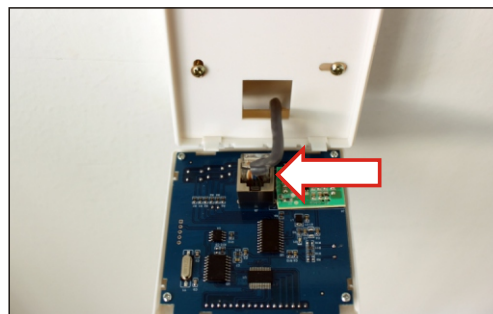
STEP 3

Putting the Wire through cover part and fix it on switch box with 2 screws.



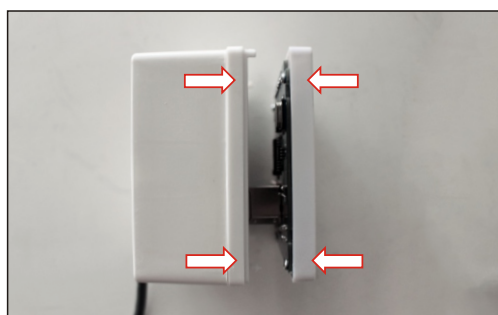
STEP 4

Inserting Cat5 cable to control board, a clicking sound indicates the successful connection.



STEP 5

Installing the control board to switch box.



STEP 6

Connecting to Unit.



Remote Controller Instructions

Sentinel Dehumidifiers can be controlled using an optional remote accessory.

The Sentinel Remote Control connects to your Sentinel Series Dehumidifier via a 25' CAT 5 cable.

The remote control contains an integrated sensor which gives you multiple options for remotely controlling your unit, in addition to monitoring the conditions surrounding the dehumidifier.

One application for the remote control is to install the dehumidifier in one room with the conditioned air ducted into a second room that contains the remote. For example, the dehumidifier could be installed in a laundry room and ducted into a living room. The remote would then be mounted in the living room so the remote sensor can control the humidity and provide easy controls for the user.

Another useful application for the remote control is if the dehumidifier is in the area that's difficult to access on a regular basis. For instance, if your dehumidifier is installed in your crawl space, the remote could be mounted in your living space or garage. This provides you with an easy way to monitor the dehumidifier.

Instructions

1. On/Off (Power) Button ϕ

Press the on/off button and the machine will start running (two beeps). Press the button again to turn the machine off.

2. Up Button/Down Button $\blacktriangle \blacktriangledown$

Use the Up and Down arrow buttons to adjust the humidity level.

3. Mode **M**

Use the Mode button to switch between dehumidification and a ducted application.

- The RH symbol on the display board indicates the sensor on the remote control is being utilized.
- The RH symbol on the display board indicates the sensor on the dehumidifier is being utilized.

4. Temperature **T**

Press the temperature button to display the current temperature on the screen.

Press the button again to turn off the display.

5. Continuous **C**

Press this button to switch the unit into continuous mode. will appear on the display to indicate continuous mode.

6. Drain Pump **P**

Use this button if the unit will not be in use for an extended period of time. Pressing the drain pump button will remove water from the pump reservoir, so the unit can be safely moved or stored.

