

# AlorAir MaxFireDry 200 Heater

## ELECTRIC HEAT DRYING SYSTEM



### APPLICATION

The powerful, portable and safe electric heater brings you a different experience.

The ALORAIR MaxFireDry 200 portable electric heat drying system with 12.5" x 12.5" x 26" durable stainless steel housing, features 4 power receptacles for connection to common 120VAC outlets. The ALORAIR MaxFireDry 200 can output up to 20,000 BTUs of clean, safe heat at 250 CFM. Double-walled, Screened Enclosure for Heating Elements, the operation is safer.

Simplified user controls include a large LCD display and Remote Thermostat. Remote thermostat control helps you control the indoor temperature more easily and conveniently.

Sturdy handles and compact housing allow for units to be stacked together for both storage and easy transportation.

In the drying room, the internal temperature safety switch ensures the safety of the machine during operation.

It is the best choice for work sites that require heating. The drying process is very fast and you can trust it completely.



### FEATURES

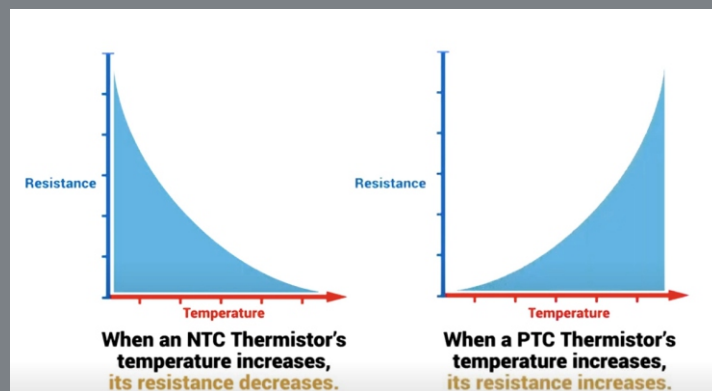
- cETL Certified
- Compact Size, Lightweight, Low noise
- High energy efficiency
- Efficient heat dissipation
- Start-Up Delay: A start-up delay prevents sparking or arcing inside the heater.
- Enclosed Elements: The heating elements are protected inside a stainless steel cabinet with double-walled insulation and screen.
- Simplified user controls include a large LCD display, keep track of jobsite.
- Stackable and Transportable: Stack up to 6 units high by aligning the rubber corners for stability, safely transport.
- ON/OFF Rocker: Use the ON/OFF rocker switch to operate power to the heater.
- Filter Replacement: Easily replace the MERV-8 filter by moving the tabs on the front.

### SPECIFICATIONS

- Power: 120VAC 60Hz, 1 Phase Heater Circuits (up to 4)
- At Maximum Heat: 20,000 BTUs
- Airflow: 250 CFM
- Shell: Stainless steel
- Wire Length: 24.6' long wire (4 PCS)
- Heating Wire: PTC heating wires (4)
- Optional 8" Flex Duct Outlet
- Optional 8" Flex Duct inlet kit
- Dim: 12.5 x 12.5 x 26 in
- Shipping Dim: 16.9 x 17.8 x 30.5 in
- Weight: 34.6 lbs
- Filter: MERV-8 Filter
- Loading quantity: 20": 156 pcs; 40": 370 pcs; 40"HQ: 412 pcs

**High energy efficiency, Compact, Lightweight, Powerful, and Safe**

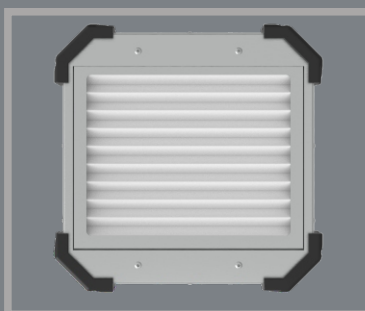
PTC heating has the characteristics of high voltage resistance, low residual current, low power consumption, complete flame retardancy, fast response time, long service life and so on. It uses PTC components as the heat source, the corrugated sheet made of aluminum alloy as a radiator, also uses the unique sandblasting cleaning process and high temperature, bonding, welding, molding of the Jiseok factory. Long service life (can be used continuously for more than 10 years), energy saving, no open flame (no redness at work), no oxygen consumption, high safety performance, easy adjustment of heat, and less affected by power supply voltage fluctuations. All reasons above make it surpasses any traditional heater.



### What Makes Us Great?



**Remote control**



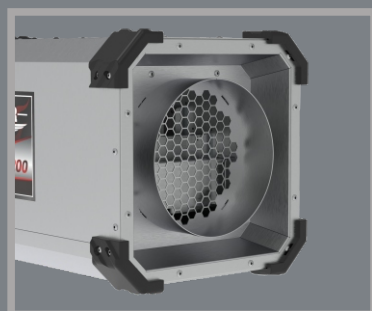
**Easy Filter Access**



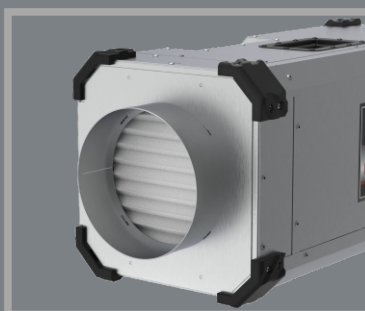
**Multi-plug**



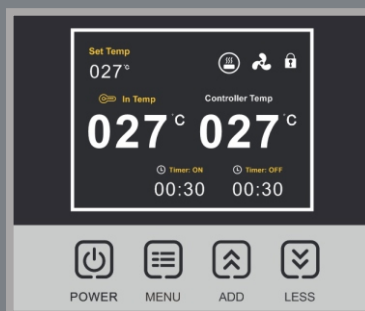
**Superior Stacking**



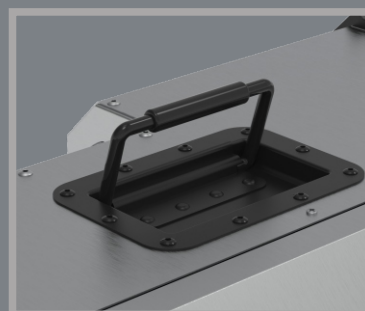
**Optional 8" Flex Duct Outlet**



**Optional 8" Flex Duct inlet kit**



**Big LCD**



**Stubborn Handle**

### DESCRIPTION

Alorair MaxFireDry 200 heater is a high-power heater, suitable for drying in flood restoration, such as "drying the subfloor". Alorair MaxFireDry 200 heater is equipped with overheat protection. When the temperature is too high, the machine will stop working, effectively preventing dangerous accidents. Using Shell fire-retardant material, even if the temperature is too high, it will not burn and cause a fire. High energy efficiency and low noise is our Alorair MaxFireDry 200 heater.

